

# 2016 ILCA Youth World Championship

July 23 – 27, 2016

Organizing Authority: Salinas Yacht Club (SYC) in conjunction with the International Lightning Class Association (ILCA) and the Lightning Fleet 405

Salinas, Ecuador



**Clase Lightning  
del Ecuador**



## SAILING INSTRUCTIONS

### 1 RULES

**1.1** The regatta will be governed by the rules as defined in *The Racing Rules of Sailing 2013 – 2016*, the *ILCA Constitution, By-Laws, Lightning Specifications* and the *Document Governing All Sanctioned Lightning Class Championships* (hereafter referred to as *Document Governing*).

**1.2** Except when RRS 88.2 applies, no national prescriptions will apply.

**1.3** The following rules below will be changed/will apply:

**1.3.1** RRS 42.3(c) is changed to say: “Except on a beat to windward, when surfing down the leeward side of a wave or planning is possible, a boat’s crew may pull *pump* the sheet, but not the guy, controlling any sail to initiate surfing or planning, but only once for each wave or gust of wind. When the mainsail is pumped, only that part of the sheet between the crew member handling the sheet and the first block on the boom shall be used. (Amended 7/25/13)

### 1.4 INFORMING THE RACE COMMITTEE

**1.4.1** A boat intending to protest or request redress based on an incident in the racing area that she is involved in or sees shall, at the first reasonable opportunity after she finishes, inform the race committee at the finishing line of her intent to protest or request redress and, when applicable, the identity of the protestee.

## **1.5 CHANGES IN HEARING PROCEDURES**

- 1.5.1** This rule applies to all hearings except hearings under rule 69. If the protest committee is able to assemble the parties to a hearing before the protest or redress time limit, it may begin the hearing and may waive the requirements of rule 61.2 or 62.2.
- 1.5.2** Rule 63.5 is changed to: ‘At the beginning of the hearing, if there is no objection, the protest or request is valid and the hearing shall be continued. If an objection is made, the protest committee shall take any evidence . . . [no further change].’
- 1.5.3** Insert a new sentence after the third sentence of rule 63.6: ‘However, the committee may limit the number of witnesses and the time during which parties may present evidence and ask questions.’
- 1.5.4** The first sentence of rule 65.2 is changed to: ‘A party to the hearing is entitled to receive the above information in writing, provided she asks the protest committee for it no later than thirty minutes after being informed of the decision or coming ashore following the last race of the day, whichever is later.’
- 1.5.5** The third sentence of rule 66 is changed to: ‘A party to the hearing may not ask for a reopening.’

## **1.6 UNDER RULE 87, CLASS RULES ARE CHANGED AS FOLLOWS:**

- 1.6.1** VIII.3: Time limit shall be two (02) hours. If no boat rounds the first mark within forty five (45) minutes, the race shall be abandoned and, if possible, resailed.
- 1.6.2** VI.2 Second Paragraph: Anchor is not required but a 50’ (15.24m) and 3/8’’ (9,525mm) line is required. Bucket is not required. Compass is not required. Paddle is not required. Throwable life preserver (cushion) is not required. Personal flotation device (PFD) with a whistle attached is required.
- 1.7** If there is a conflict between languages the text written in its original language will take precedence.

## **2 ADDITIONAL IDENTIFICATION**

- 2.1** Boats shall display bow numbers for competitors to identify them at boat switch after each race. The Race Committee will identify boats using sail numbers and country code.

## **3 CAMERAS AND ELECTRONIC EQUIPMENT**

- 3.1** Boats may be required to carry cameras, sound equipment or positioning systems equipment as specified by the organizing authority.
- 3.2** Boats are allowed to carry radio communications devices (hand-held VHF) on channel 23, only to receive official messages from the Race and Protest Committees.

## **4 NOTICES TO COMPETITORS**

- 4.1** Notices to competitors will be posted on the official notice board located in front of the regatta office.

## **5 CHANGES TO SAILING INSTRUCTIONS**

- 5.1** Any change to the sailing instructions will be posted before 10h00 on the day it will take effect, except that any change to the schedule of races will be posted by 20h00 on the day before it will take effect.

## **6 SIGNALS MADE ASHORE**

- 6.1** Signals made ashore will be displayed at the official mast located in front of the regatta office.
- 6.2** When flag AP is displayed ashore, '1 minute' is replaced with 'not less than 45 minutes' in the race signals AP. This changes race signals AP in Race Signals.
- 6.3** When flag Y is displayed ashore, RRS 40 applies at all times while afloat. This changes the Part 4 preamble.

## **7 FORMAT OF RACING**

- 7.1** The regatta will consist of a single series of seven (07) races.

## **8 SCHEDULE OF RACES**

- 8.1** *Friday - July 22, 2016*  
From: 10h00 to: 16h00 Early measurement and inspection

*Saturday - July 23, 2016*  
From: 10h00 to: 17h00 Measurement and inspection

*Saturday, July 23*  
13h30 Practice race

*Sunday, July 24*  
13h00 1<sup>st</sup> race - next race after boat switch

*Monday, July 25*  
13h00 3<sup>th</sup> race - next race after boat switch

*Tuesday, July 26*  
13h00 5<sup>th</sup> race - next race after boat switch

*Wednesday, July 27*  
13h00 7<sup>th</sup> race

- 8.2** No races will be sailed ahead of schedule.

**8.3** To alert boats that a race or sequence of races will begin soon, the orange starting line flag will be displayed with one sound at least five minutes before a warning signal is made.

**8.4** No warning signals will be given on July 27, 2016 after 15h00.

## **9 CLASS FLAGS**

**9.1** The class flag will be a white rectangle with a red Lightning class logo

## **10 RACING AREAS**

**10.1** The racing area will be the Salinas bay, approximately 1.5 nautical miles northeast of the Salinas Yacht Club.

## **11 THE COURSES**

**11.1** The diagram in addendum 'A' shows the course, including course signals, the approximate angles between legs, the order in which marks are to be passed, and the side on which each marks is to be left. The approximate leg length will be one (01) nautical mile.

**11.2** No later than the warning signal, the race committee signal boat will display the approximate compass bearing of the first leg and the course to be sailed on a placard.

**11.3** Courses will not be shortened. This changes rule 32

## **12 MARKS**

**12.1** Marks 1, 4S and 4P will be yellow tetrahedrons buoys. Mark 1A will be an orange round buoy.

**12.2** New marks, as provided in instruction 15.1, will be orange tetrahedrons buoys.

**12.3** The starting and finishing marks will be race committee boats.

## **13 BOATS**

**13.1** Boats will be provided for competitors, who shall not make any changes to tune or rigging of any boat other than normal easily adjusted running gear or cause them to be modified in any way except that:

(a) Wind indicators, including yarn or thread, may be tied or taped anywhere on the boat;

(b) Hulls, centreboards and rudders may be cleaned, but only with regular soap and water

(c) Adhesive tape may be used anywhere above the water line

**13.2** All equipment provided with the boat for sailing purposes shall be in the boat while afloat.

**13.3** The penalty for not complying with one of the above instructions will be disqualification from all races sailed in which the instruction was broke

**13.4** Competitors shall report any damage or loss of equipment, however slight, to the equipment inspector or measurer immediately after securing the boat ashore. The penalty for breaking this instruction, unless the protest committee is satisfied that the competitor made a determined effort to comply, will be disqualification from the race most recently sailed

**13.5** The use of a compass is not allowed.

## **14 THE START**

**14.1** The starting line will be between staffs displaying orange flags on starting marks on each side.

**14.2** A boat starting later than four (04) minutes after her starting signal will be scored Did Not Start (DNS) without a hearing. This changes rule A4 and A5

**14.3** If flag U has been displayed as the preparatory signal, no part of a boat's hull, crew, or equipment shall be in the triangle formed by the ends of the starting line and the first mark during the last minute before her starting signal. If a boat breaks this rule and is identified, she shall be disqualified without a hearing but not if the race is restarted or resailed or postponed or abandoned before the starting signal. This changes rule 26 and A5. If flag U is used, rule 29.1 does not apply. Scoring abbreviation for U flag is UFD, this changes rule A11.

**14.4** (a) If a boat fails to start, breaks rule 30.3 or instruction 14.3, the race committee at Mark 1 may display a flag X, point at her, make a sound signal and hail her sail number and country code. This changes race signal X in Race Signals.

(b) The hailed boat shall immediately retire from the race. If she fails to do so she will be disqualified without a hearing and her score will not be excluded. Failure to make the signal will not be grounds for a request for redress. This changes rules 60.1(b), 62.1(a) and A5

## **15 CHANGE OF THE NEXT LEG OF THE COURSE**

- 15.1** To change the next leg of the course, the race committee will lay a new mark (or move the finishing line) and remove the original mark as soon as practicable. When in a subsequent change a new mark is replaced, it will be replaced with an original mark.

## **16 THE FINISH**

- 16.1** The finishing line will be between staffs displaying orange flags on finishing marks on each side.

## **17 PENALTY SYSTEM**

- 17.1** The first two sentences of rule 44.1 are changed to: ‘A boat may take a One-Turn Penalty when she may have broken a rule of Part 2 or rule 31 while racing. However, when she may have broken a rule of Part 2 while in the zone around a mark other than a starting mark, her penalty shall be a Two-Turns Penalty.’
- 17.2** After a race, a boat that may have broken a rule of Part 2 or rule 31 while racing may take a Post-Race Penalty for that incident. The penalty shall be a Scoring Penalty, calculated as stated in rule 44.3(c). However, rules 44.1(a) and (b) apply. A boat takes a Post-Race Penalty by informing the race committee in writing and identifying the race number and when and where the incident occurred. The Post-Race Penalty shall be (a) 20%, if taken before the protest time limit, or (b) 30%, if taken after the protest time limit but before the beginning of a hearing involving the incident
- 17.3** Insert a new sentence after the second sentence of RRS 44.1: “When an infringing yacht has its spinnaker drawing at the time of the infringement, drops it completely while taking her penalty, and resets it immediately and has it drawing after the penalty, the penalty is a One-Turn Penalty.”
- 17.4** In accordance with RRS 70.5 there is no appeal from an International Jury. If the requirements detailed in RRS 70.5 are not met, decisions by the protest committee may be appealed.
- 17.5** Appendix P will apply as changed in instruction 17.6
- 17.6** Rule P2.3 will not apply and rule P2.2 is changed so that it will apply to any penalty after the first one.

## **18 TIME LIMITS AND TARGET TIMES**

- 18.1** Time limit shall be two (02) hours. If no boat rounds the first mark within forty five (45) minutes, the race shall be abandoned and, if possible, resailed.

- 18.2** Target time for each race is one (01) hour; failure to meet target time will not be grounds for redress. This changes rule 62.1(a)
- 18.3** Boats failing to finish within ten (10) minutes after the first boat sails the course and finishes will be scored Did Not Finish (DNF) without a hearing. This changes rule 35, A4, A5

## **19 PROTESTS AND REQUESTS FOR REDRESS**

- 19.1** Protest forms are available at the regatta office located at the Marinería building. Protests and requests for redress or reopening shall be delivered there within the appropriate time limit.
- 19.2** The protest time limit is ninety (90) minutes after the last boat has finished the last race of the day or the race committee signals no more racing for the day, whichever is later.
- 19.3** Notices will be posted no later than thirty (30) minutes after the protest time limit to inform competitors of hearings in which they are parties or named as witnesses. Hearing will be held in the protest room, located at the first floor of the Marinería building above the regatta office, beginning at the time posted by the protest committee.
- 19.4** Notices of protests by the race committee or protest committee will be posted to inform boats under rule 61.1(b)
- 19.5** A list of boats that have been penalized under Appendix P for breaking rule 42 will be posted.
- 19.6** Breaches of instructions 2, 3, 14.3, 21, 24, 26, 27, 28 and 31 will not be grounds for a protest by a boat. This changes rule 60.1(a). Penalties for these breaches may be less than disqualification if the protest committee so decides.
- 19.7** On the last day of racing, a request for reopening a hearing shall be delivered
- (a) Within the protest time limit if the requesting party was informed of the decision on the previous day
  - (b) No later than fifteen (15) minutes after the requesting party was informed of the decision on that day
- This changes rule 66
- 19.8** On the last scheduled day of racing, a request for redress from a protest committee decision shall be delivered no later than fifteen (15) minutes after the decision was posted. This changes rule 62.2
- 19.9** Decisions of the international jury will be final as provided in rule 70.5

## **20 SCORING**

- 20.1** Three (03) races are required to be completed to constitute a series
- 20.2** (a) When fewer than four (04) races have been completed, a boat's series score will be the total of her race scores
- (b) When four (04) or more races have been completed, a boat's series score will be the total of her race scores excluding her worst score
- 20.3** To request a correction of an alleged error in posted race or series results, a boat may complete a scoring enquiry form available at the race office.

## **21 SAFETY REGULATIONS**

- 21.1** A boat that intends to participate in a race, shall sign the boat assignment form at the pier before leaving to the racing area and at her return from every race, including when returning for boat switching. A boat that fails to comply with this instruction shall receive one (01) point discretionary penalty. This changes rule A5.
- 21.2** A boat that retires from a race shall notify the race committee as soon as possible. That boat shall complete a retirement declaration form at the regatta office on return ashore.

## **22 REPLACEMENT OF CREW OR EQUIPMENT**

- 22.1** Substitution of competitors will not be allowed without prior written approval of the Race Committee.
- 22.2** Substitution of damaged or lost equipment will not be allowed unless authorized by the Race Committee. Requests for substitution shall be made to the Race Committee at the first reasonable opportunity.

## **23 EQUIPMENT AND MEASUREMENT CHECKS**

- 23.1** A boat or equipment may be inspected at any time for compliance with the class rules and sailing instructions. On the water, a boat can be instructed by an equipment inspector or measurer to proceed immediately to a designated area for inspection.

## **24 EVENT ADVERTISING**

- 24.1** Boats may be required to display advertising supplied by the organizing authority. If necessary, further information about supplied advertising material will be provided.



**25 OFFICIAL BOATS**

- 25.1** (a) Official boats will be identified with white flags with the letters “CR” in red or blue.
- (b) Jury boats will be identified with black flags with the letters “JURY” in white.
- (c) Measurer boats will be identified with black flags with letter “M” in white.
- (d) Press and spectator boats will be identified with pink flags.

**26 SUPPORT BOATS**

- 26.1** Team leaders, coaches and other support personnel shall stay outside areas where boats are racing (defined as 100 meters outside the lay lines of the course including the start area) from the time of the preparatory signal of each race until all boats have finished or retired or the race committee signals a postponement, general recall or abandonment.
- 26.2** Support boats will be identified with white flags with the country code letters in black

**27 TRASH DISPOSAL**

- 27.1** Trash may be placed aboard support or official boats.

**28 BERTHING**

- 28.1** Boats shall be kept in their assigned places in the lightning area of the Salinas Yacht Club

**29 – 30** N/A

**31 RADIO COMMUNICATION**

- 31.1** Except in an emergency, a boat shall neither make radio transmissions while racing nor receive radio communications not available to all boats. This restriction also applies to mobile telephones.

**32 PRIZES**

- 32.1** Prizes will be given as follows:

- Perpetual trophy for the ILCA Youth World Champion
- Trophies for places 1 - 5
- Flags to winners of each race
- Shipshape Award
- Thomas Allen Youth Worlds Sportsmanship Award

### **33           DISCLAIMER OF LIABILITY**

**33.1**       Competitors participate in the regatta entirely at their own risk. See rule 4, Decision to Race. The organizing authority will not accept any liability for material damage or personal injury or death sustained in conjunction with or prior to, during, or after the regatta.

### **34           INSURANCE**

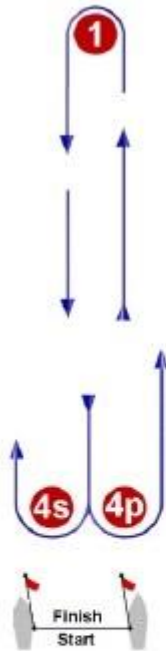
**34.1**       Each participating boat shall be insured with valid third-party liability insurance with a minimum cover of \$500 US DOLLAR per incident or the equivalent.

### **35           RIGHTS TO USE NAME AND LIKENESS**

**35.1**       By participating in this event, competitors automatically grant to the organizing authority and the event sponsors the right, in perpetuity, to make, use, and show, at their discretion, any photography, audio and video recordings, and other reproductions of them made at the venue or on the water from the time of their arrival at the venue, until their final departure, without compensation.

# ADDENDUM A

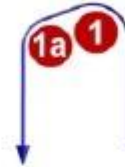
**L**



**Course: Windward/Leeward**

Signal	Marking Rounding Order
L2	Start - 1 - 4s/4p - 1 - Finish
L3	Start - 1 - 4s/4p - 1 - 4s/4p - 1 - Finish
L4	Start - 1 - 4s/4p - 1 - 4s/4p - 1 - 4s/4p - 1 - Finish

**LA**



**Course: Same As Course L Except With Offset Mark 1A**

Signal	Marking Rounding Order
LA2	Start - 1 - 1a - 4s/4p - 1 - 1a - Finish
LA3	Start - 1 - 1a - 4s/4p - 1 - 1a - 4s/4p - 1 - 1a - Finish
LA4	Start - 1 - 1a - 4s/4p - 1 - 1a - 4s/4p - 1 - 1a - 4s/4p - 1 - 1a - Finish

The Race Committee